

Decor

House of Glass

By Cindy L. Bowman

Photography by Charles Hodges

STEVE GOLDMAN'S HOME, with its contemporary lines and glass walls, serves as a window to the glass creations housed within. Light infiltrates from all sides, catching its reflection in everything from the granite floors, glass staircase and glass ceiling to the glass sculptures strategically placed throughout.

"I built this house as a kind of sculpture," says Goldman.

"We cut no trees during the construction of the house, so the home became part of the environment. Because most of the home is glass, it's kind of like a reverse greenhouse."

Goldman, an art enthusiast and glass collector, began collecting glass sculpture approximately three years ago, acquiring his vast collection rather quickly. Goldman, who holds a degree in physics, has always found glass and the reflection of light interesting.

"I always found the glass within the physics equipment so interesting that I used to set the equipment around the house," says Goldman.

Although some of it has been replaced with glass sculptures, a few instruments remain on display throughout the approximately 10,000-square-foot home.

Goldman explains it has only been in the last 20 years that glass has become recognized as an art form.

"Most glass was being done by the Italians; it was a very exclusive classical club. Littleton, Tagliapietra, Chihuly and guys like them really started the fine-art glass movement, which has become the standard for today's artists."

In addition to his affinity for glass, he is a dedicated patron of many Central Florida arts organizations. One would be hard pressed to find a group that Goldman is not a part of — he currently serves as president-elect for the Orlando Philharmonic Orchestra board and on



Photo courtesy of Steve Goldman

A work in progress: the Chihuly chandelier and the painting from which it is designed.

the board of the OCCA Festival of Orchestras. He is also involved with the Bach Festival, Orlando Science Center and Orlando-UCF Shakespeare Festival.

His involvement with the Orlando Museum of Art Acquisition Trust was a catalyst for his excitement about glass. During one of the Acquisition Trust's trips to Seattle, Goldman acquired Flora Mace and Joey Kirkpatrick's *Zanfircio Apple* and *Italian Prune Plum* sculptures, as well as Lino Tagliapietra's *Half Saturno* and *Borneo* sculptures.

One of his most recent — and coveted — glass ventures is a chandelier creation by Washington artist Dale Chihuly. The 1,200-pound, 16-foot chartreuse chandelier of blown glass elements will hang in Goldman's living room from the space frame encasing the two-story glass skylight. Glass tentacles will extend throughout the space frame. Chihuly creations are all based on paintings that he does prior to beginning a sculpture. His painting of the chandelier serves one of Goldman's office walls.

Goldman may have even more room for sculptures in the future. He is planning an extension of his glass house with a 16,000-square-foot addition to serve as office space and a gathering place. He hopes it will help build excitement and support as a social gathering place for arts patrons. Goldman believes that only through cathartic gatherings will the arts community truly come together, "knitting together a coalition through social bonds."

More than glass resides in this home; it's a hope that all art forms will thrive.



These colorful Chihuly glass "clusters," designed by the artist specifically for Goldman, will be installed along the two-story glass wall in Goldman's family room to take advantage of the strong Florida sunshine that beams through the room.



Title: *Dearest Flower*

Artist: Christopher Ries

Description: This piece measures 39 11/16" x 16" x 8 3/8". This sculpture was a work in progress when Goldman visited the studio. It features a magnificent reflection of an abstract floral pattern within the interior imagery.



Title: *Embrace*

Artist: Christopher Ries

Description: The largest and most significant Ries sculpture in his collection, *Embrace* measures 45" x 24" x 8 1/8" and was created in 1990. This sculpture was sculpted from the largest block of optic crystal that Schott Glass Technologies currently makes.



Title: *Moonstone*

Artist: Christopher Ries

Description: Created in 1985, the sculpture measures 27" x 18" x 14". The glass for this particular piece has been "doped" with zinc, giving the glass a luminous quality. This work represents more than a year of hand polishing to achieve the final shape. In the bottom of the sculpture, a half sphere about the size of a tennis ball has been cut and hand engraved with the details of the moon's surface. The optic qualities of the sculpture reflect this detail in the upper area, where an image of the moon seemingly floats in the interior of the sculpture.



Title: *Spirit*

Artist: Christopher Ries

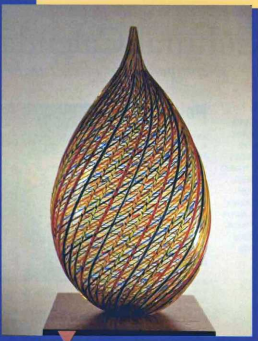
Descriptions: Created in 1990, *Spirit* measures 39" x 13" x 9". The profile of this sculpture looks like a flame and the interior imagery is a soft reflection resembling a flickering candle.



Title: *Half Saturno*

Artist: Lino Tagliapietra

Description: This work was created in 2000 and when properly displayed in its metal stand, measures 62" x 28" x 6". Tagliapietra begins with a concentrated gather of glass in the center and begins to apply concentric rings of colored glass working outwards to complete a 28" diameter disc of glass. Next he uses a small metal pipe plunged into the center on the molten glass to blow the bubble. After the glass is cooled in an annealing oven, it is hand cut and polished to its final shape.



Title: *Borsno*

Artist: Lino Tagliapietra

Description: Created in 2000, *Borsno* measures 18" x 10" x 8". Beginning with a standard clear glass bubble on the end of his blowpipe, Tagliapietra picks up colored glass canes at precise intervals. Once the bubble is surrounded in glass cane, the work in progress is re-heated, blown and twisted into its final shape.

Forefront

Title: *Whistling Susan*

Artist: James Randolph

Description: Created in 1998, *Whistling Susan* measures 26" x 9" x 4". To create this piece, Randolph laminates multiple layers of float glass together and then carves the glass freehand on a carbide belt sander cooled with water.

Back left

Title: *Zanzibar Apple*

Artists: Floa Mace and Joey Kirkpatrick

Description: Created in 2000, this piece measures 18" x 17" x 18". In this piece, "a la Tagliapietra," lengths of intricately twisted colored glass cane is laid out on the hot plate and picked up at precise intervals onto a glass bubble. The bubble is reheated and blown and shaped into its final form.

Back center

Title: *Italian Prune Plum*

Artists: Floa Mace and Joey Kirkpatrick

Description: Created in 2000, this piece measures 8" x 14" x 9". The rich color in this piece is achieved through the repeated applications of colored glass frit that is "dusted" onto the hot glass bubble. The last coating of clear glass is gathered before the piece is formed into its final shape.

